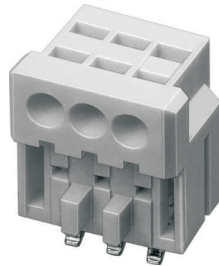
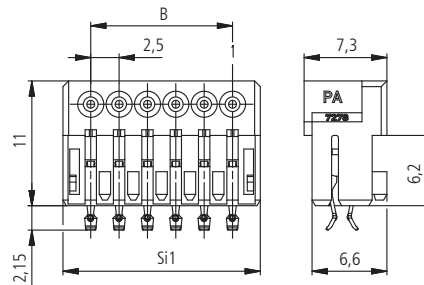


Serie MF 7278 für Einzelleiter zum direkten Stecken, mit PCB-Verrastung ohne Kammverlustr, für Querschnitte 0,12 - 0,14 mm² / AWG 26

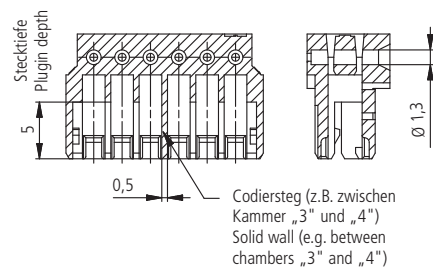
Series MF 7278 for single wire for direct connections, with PCB locking without loss of contact, for wire sizes 0.12 - 0.14 mm²/ AWG 26



Darstellung vormontiert
Designation pre-assembled



Darstellung ohne Kontakte
Designation without contacts



Ø 1,6 mm - alternativ
Rastfenster 1,6^{+0,1} x 1,6^{+0,1}
Ø 1,6 mm - alternativ
Lock window 1,6^{+0,1} x 1,6^{+0,1}

