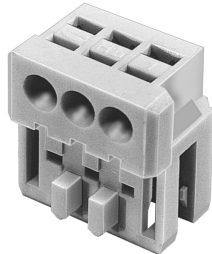
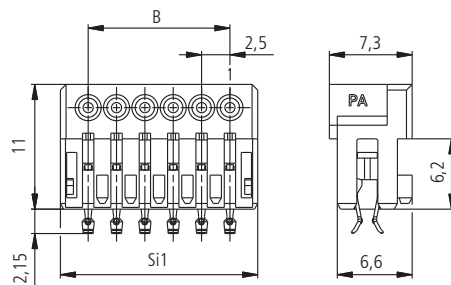


Serie MF 7238 für Einzelleiter zum direkten Stecken, mit PCB-Verrastung ohne Kammverlust

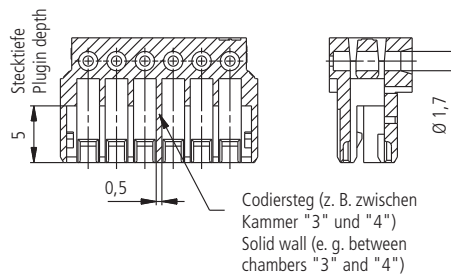
Series MF 7238 for single wire for direct connections, with PCB locking without loss of contact



Darstellung vormontiert  
Designation pre-assembled



Darstellung ohne Kontakte  
Designation without contacts



Ø 1,6 mm - alternativ  
Rastfenster  $1,6^{+0,1} \times 1,6^{-0,1}$   
Ø 1,6 mm - alternativ  
lock window  $1,6^{+0,1} \times 1,6^{-0,1}$

